



CD20 mouse mAb(ABT065)

Catalog No	YP-Ab-15545
Isotype	IgG
Reactivity	Human
Applications	IHC;WB;IF
Gene Name	MS4A1 CD20
Protein Name	CD20
Immunogen	Synthesized peptide derived from human CD20
Specificity	The antibody can specifically recognize human CD20 protein.
Formulation	Liquid in PBS containing 50% glycerol, 0.5% BSA and 0.84% sodium azide.
Source	Mouse, Monoclonal/IgG1, Kappa
Purification	The antibody was affinity-purified from mouse ascites by affinity-chromatography using specific immunogen.
Dilution	IHC-p 1:100-500, WB 1:200-1000, IF 1:100-500
Concentration	1 mg/ml
Purity	≥90%
Storage Stability	-20°C/1 year
Synonyms	B-lymphocyte antigen CD20 (B-lymphocyte surface antigen B1;Bp35;Leukocyte surface antigen Leu-16;Membrane-spanning 4-domains subfamily A member 1;CD antigen CD20)
Observed Band	
Cell Pathway	Cell membrane ; Multi-pass membrane protein . Cell membrane ; Lipid-anchor . Constitutively associated with membrane rafts. .
Tissue Specificity	Expressed on B-cells.
Function	caution:Epitope 1, mapped in PubMed:16785532, is predicted to be buried in the membrane. Its accessibility to the extracellular space, and thus to antibody recognition, is not explained.,function:This protein may be involved in the regulation of B-cell activation and proliferation.,online information:CD20 entry,pharmaceutical:Monoclonal antibodies(mAb) against CD20 are used to treat B-cell non-Hodgkin's lymphoma (NHL). These antibodies include Rituximab (Mabthera), Britumomab (Zevalin) and Tositumomab (Bexxar). CD20 engaged by mAb can generate transmembrane signals capable of directly controlling cell growth and triggering cell death in certain tumors. Alternatively, mAb can mediate complement-dependent cytotoxicity.,PTM:Phosphorylated. Might be functionally regulated by protein kinase(s).,similarity:Belongs to the MS4A family.,tissue specificity:Expressed on B-cells.,

**Background**

This gene encodes a member of the membrane-spanning 4A gene family. Members of this nascent protein family are characterized by common structural features and similar intron/exon splice boundaries and display unique expression patterns among hematopoietic cells and nonlymphoid tissues. This gene encodes a B-lymphocyte surface molecule which plays a role in the development and differentiation of B-cells into plasma cells. This family member is localized to 11q12, among a cluster of family members. Alternative splicing of this gene results in two transcript variants which encode the same protein. [provided by RefSeq, Jul 2008],

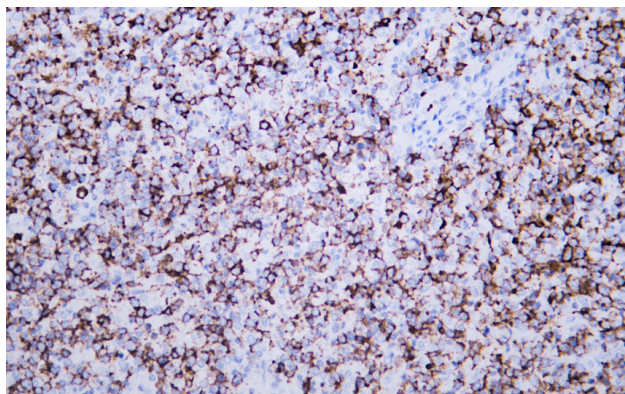
matters needing attention

Avoid repeated freezing and thawing!

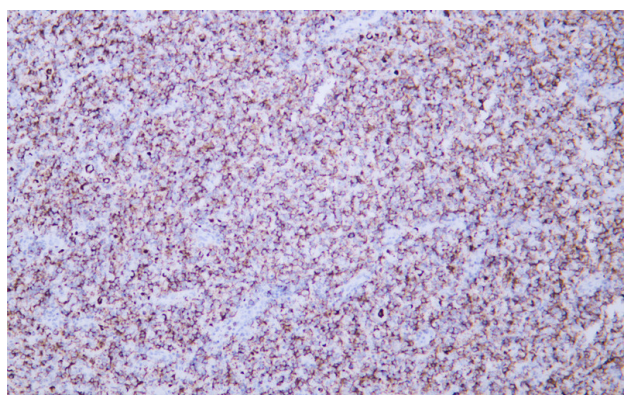
Usage suggestions

This product can be used in immunological reaction related experiments. For more information, please consult technical personnel.

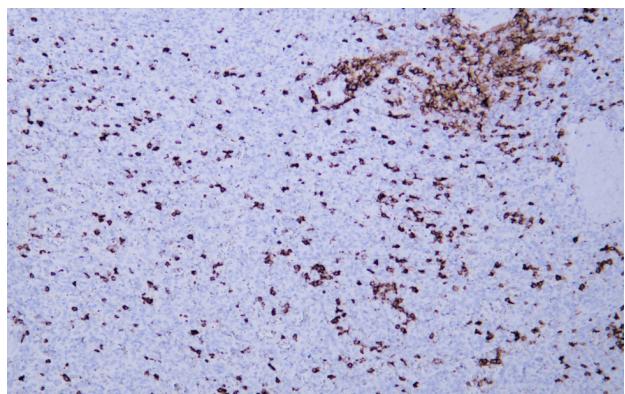
Products Images



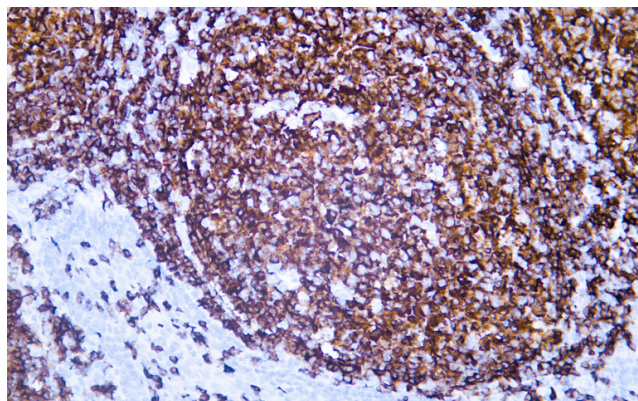
Human diffuse large B-cell lymphoma tissue was stained with Anti-CD20 (ABT065) Antibody



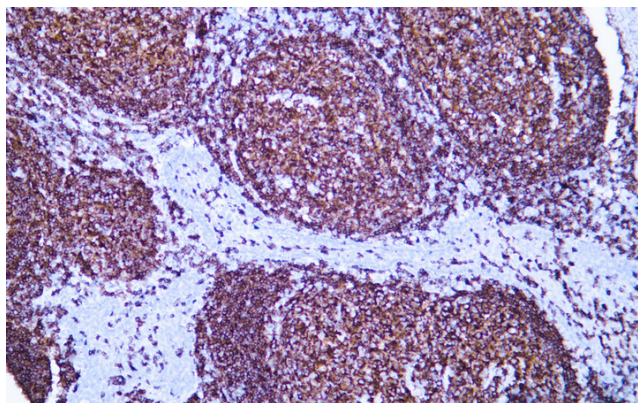
Human diffuse large B-cell lymphoma tissue was stained with Anti-CD20 (ABT065) Antibody



Human spleen tissue was stained with anti-CD20(ABT065) antibody.



Human tonsil tissue was stained with anti-CD20(ABT065) antibody.



Human tonsil tissue was stained with anti-CD20(ABT065) antibody.